

Last year we had a fabulous conference and we are pleased to announce that we will be holding this year's conference at the same venue.

It is a wonderful opportunity to network with other DTs & DLs in the local authority and for those out of authority we hope to make the event virtual too.

The conference will take place on:

Tuesday 2nd July 2024

The Venue : **Crowne Plaza Reading East**

Address: **Wharfedale Road, Winnersh Triangle. RG41 5TS**

The conference will feature training from the Annex Project which has a focus on attendance and the afternoon session includes our keynote speaker Ashley John-Baptiste.

We look forward to seeing you all there!



*The Annex Project Limited, 47a Nine Mile Ride,
Finchampstead, Berkshire RG40 4ND*

Our young people pack anxiety in their school bag – let's help them to manage this and get into school, along with their books and lunch money.

Anne-Marie Natasha and Peter bring a wealth of knowledge both lived and learnt. They have a unique delivery style that brings the most difficult of topics to life. Peter has fought his huge anxiety around education and won and will help you to understand what our young people are really feeling around accessing education.

This interactive training will open the doors to understanding and supporting school refusers.

Whats On

- ★ Friday 1 March 2024 National Places Offer Day (Secondary)
- ★ Monday 11 March 2024 PP+ Deadline
- ★ Monday 18 March 2024 PEP Deadline
- ★ Friday 29 March 2024 – Sunday 14 April 2024 Easter Holiday (WBC)
- ★ Monday 15 April 2024 National Place Offer Day (Primary/Junior)
- ★ Monday 15 April 2024 Summer Term Begins
- ★ Thursday 2 May 2024 – 15:00 – 16:30 Wokingham DSL Meeting



Ashley John-Baptiste

The Secret Power of Showing Up (Making a Difference in the Life of a Child)

Ashley John-Baptiste is a BBC presenter as well as a Speaker, who has a remarkable story of how he overcame his troubled childhood in care to exceed expectations.

Taken into care at a young age and growing up being shuttled between foster families and children's homes, Ashley is a strong champion for care experience people.

Ashley tells an uplifting, inspirational and often humorous account of his childhood. His story of a disjointed upbringing in foster care where so many of his peers ended up in jail, on drugs or worse is shocking to hear, however it makes his rise to success even more amazing.

How do you book your place?

To reserve your place at the conference please click [here](#) or scan the QR code:






Department
for Education

Using pupil premium: guidance for school leaders

February 2024

Previously looked-after children

Pupil premium funding based on the eligibility of previously looked-after children is part of your school's pupil premium allocation.

The [designated teacher](#) has a key role in ensuring that the specific needs of previously looked-after children are reflected in how you use your pupil premium plus.

Your designated teacher should:

- encourage parents of eligible previously looked-after children to tell the school if their child is eligible to attract Pupil Premium Plus funding
- consult the Virtual School Head on how to use the funding effectively, where appropriate
- encourage parents and guardians' involvement in how Pupil Premium Plus funding is used to support their child
- be the main contact for queries about how pupil premium is being used to support previously looked-after children

A quick reminder of the EEF Guide to the Pupil Premium 'Menu of approaches'. For the full document please click [here](#).

The EEF Guide to the Pupil Premium
'Menu of approaches': evidence brief and supporting resources

This planning tool is designed to support you—a school leader, governor, or trustee—as you consider potential approaches to your Pupil Premium spending. It introduces findings from high quality research related to each strand of the Department for Education's 'menu of approaches' and signposts evidence-informed resources.

Before considering approaches, a crucial first step in strategy development is to conduct a robust diagnosis of specific barriers to learning faced by your socio-economically disadvantaged pupils. For more support with developing your Pupil Premium strategy, see our [Guide to the Pupil Premium](#).





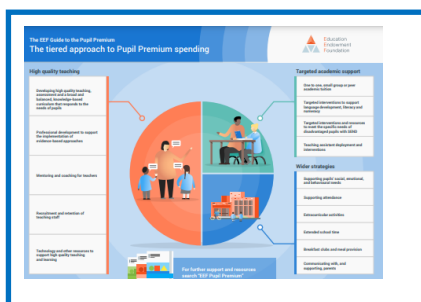
The EEF Guide to the Pupil Premium Discussion prompts for governors and trustees to support an effective strategy

As a school governor or trustee, you have an important role to play in supporting and challenging the leadership team at your school to improve outcomes for socio-economically disadvantaged pupils. How the school spends its Pupil Premium funding is an important part of this role.

Did you know?

The Department for Education (DfE) requires every school to review and publish an updated Pupil Premium strategy statement every academic year before 31 December.

Ensure your governors or trustees are able to challenge and support the leadership team at your setting to improve the outcomes for vulnerable groups.



Don't forget the virtual school are here to assist you should you require any support. You can email us at the following addresses and we promise we will respond within 24 hours.

Jane Everton Head of Virtual School and Vulnerable Learner Support

Jane.Everton@wokingham.gov.uk

Ruth Blyth Deputy Headteacher

Ruth.Blyth@wokingham.gov.uk

Tracy Meadows PEP Officer

Tracy.Meadows@wokingham.gov.uk

Kat Johnston Post 16 PEP Officer

Kat.Johnston@wokingham.gov.uk

Emma Griffith Early Years Officer

Emma.Griffith@wokingham.gov.uk

Jessica McGinley UASC & PEP Officer

Jessica.McGinley@wokingham.gov.uk

Jenny Lucas Education Coordinator

Jenny.Lucas@wokingham.gov.uk

Here's how to
CONTACT US!



CONTACT US